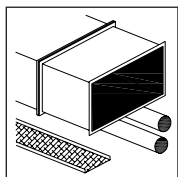


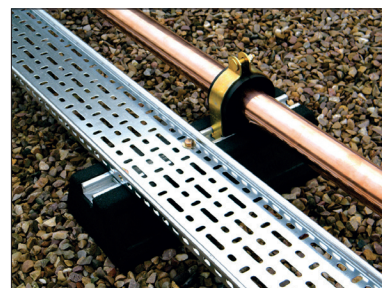
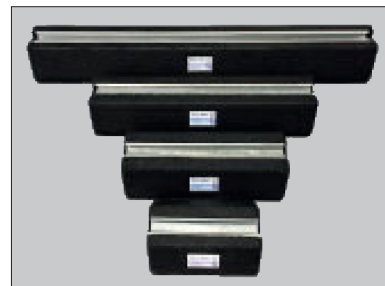
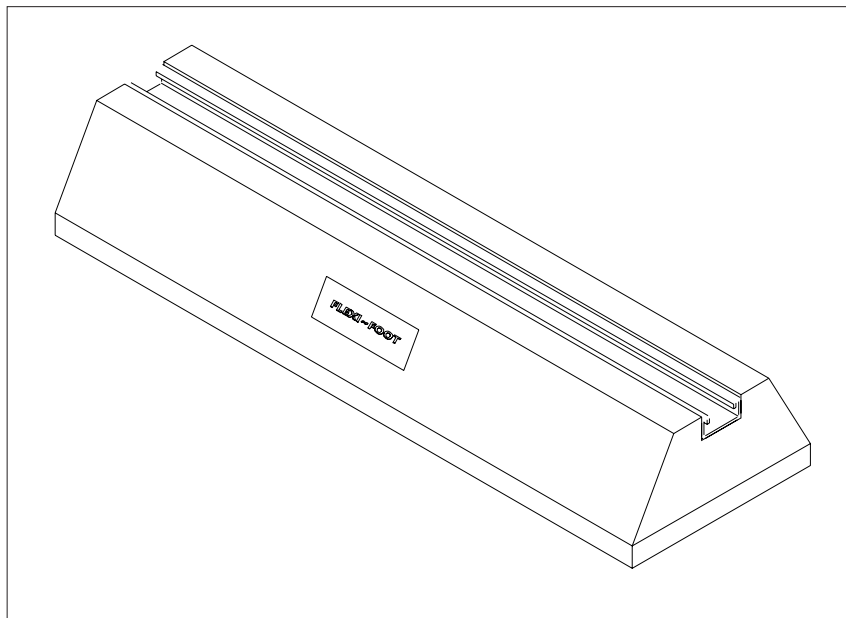


EVERYDAY



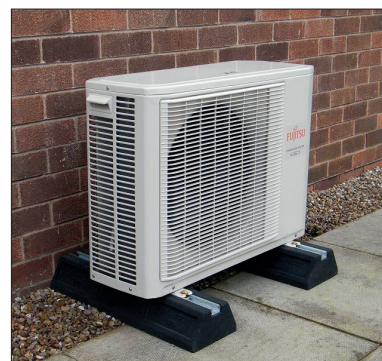
## ■ FLEXI FOOT

SUPPORTING ELECTRICAL CONTAINMENT, SMALL F&R PIPEWORK AND SINGLE FAN AC UNITS

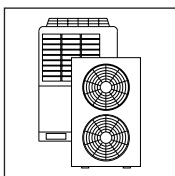


## ■ FEATURES & BENEFITS

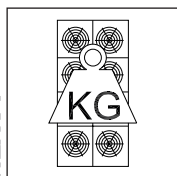
- Available in four sizes
- Non-penetrative support
- Flexible design to accommodate late design changes
- Fast and simple installation
- Supplied with integrated 41 x 21 mm galvanised steel strut, fully bonded to the foot, stronger than some aluminium alternatives
- Full AutoCAD drawing support
- Load management and wind calculations available
- Full on-site support and surveying services



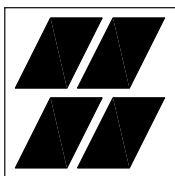
LIGHT



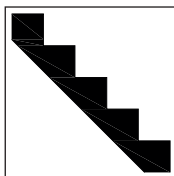
HEAVY



SOLAR



ACCESS



riba  
product  
selector

NBS Plus

**FLEXI-EVERYDAY**  
Flexi Foot

The DiversiTech International sales team are available to answer your questions or queries on this product. Our experts are waiting for your call +44 (0)115 900 5858 or if you prefer send an email to [sales@flexisupportsystems.co.uk](mailto:sales@flexisupportsystems.co.uk) or visit [www.flexisupportsystems.co.uk](http://www.flexisupportsystems.co.uk)

**DIVERSITECH**<sup>®</sup>  
INTERNATIONAL



## FLEXI FOOT

The Flexi Foot with Strut comes in four sizes - 250mm, 400mm, 600mm and 1000mm - is also available as a low profile option. They are manufactured from heavy-duty recycled rubber, and are supplied with an integral 41 x 21 mm galvanised steel strut adhered to the rubber with industrial strength adhesive. The dense nature of these products make them suitable for various building services supports.

### Typical installation

Part code: FF-250-S



Part code: FF-400-S



Part code: FF-600-S



## APPLICATION

- Suitable for supporting everyday installation of small F&R pipework, lightweight cable basket, and cable tray at low level.

Alternatively the installer can build up additional struts for elevated services subject to stability considerations. Flexi Foot with Strut are also suitable to support lighter AC split condensers, and air source heat pumps in wind protected environments.

## WHAT OUR SERVICE OFFERS YOU

- Quotations on request
- Full Auto-CAD drawing support
- Site support and site surveys
- Load management calculations
- Over 25 years experience in flat roof design, and providing support systems to building services
- Fast delivery
- Experienced in-house technical staff

## MATERIAL SPECIFICATION

- Foot - SBR recycled rubber BS 7188:1989+ A2:2009 and BS EN 1176-7:2008 UV stabilised
- Strut - 41 x 21 x 2.5mm steel strut galvanised steelwork. BS EN 1021 1:2006
- Finish - Galvanising: BS EN ISO 1461 :2009
- Robust high quality materials used
- Channel is compatible with industry standard fixings and fixtures
- Suitable for internal / external environments in temperatures between -40° to +80°C BS EN IEC 60068-2-52:2018

Code	Description	Length mm	Width mm	Height mm	Safe working load*	Weight
FF-250-S	Flexi Foot with Strut - 250mm	250	185	100	175kg	2.8kg
FF-400-S	Flexi Foot with Strut - 400mm	400	185	100	280kg	4.6kg
FF-600-S	Flexi Foot with Strut - 600mm	600	185	100	420kg	7.6kg
FF-1000-S	Flexi Foot with Strut - 1000mm	1000	185	100	700kg	12kg
FF-250-S-PL	Flexi Foot with Strut - 250mm (low profile)	250	185	50	100kg	1.4kg
FF-400-S-PL	Flexi Foot with Strut - 400mm (low profile)	400	185	50	150kg	2.3kg

### Specification Extract

External F&R pipes/ cable tray/ ac split unit will be supported on the DiversiTech Flexi Foot with Strut  
Tel: +44(0)115900 5858

**FLEXI-EVERYDAY**  
Flexi Foot

The DiversiTech International sales team are available to answer your questions or queries on this product. Our experts are waiting for your call +44 (0)115 900 5858 or if you prefer send an email to [sales@flexisupportsystems.co.uk](mailto:sales@flexisupportsystems.co.uk) or visit [www.flexisupportsystems.co.uk](http://www.flexisupportsystems.co.uk)

**DIVERSITECH**<sup>®</sup>  
INTERNATIONAL