



OCTOBER 2017

VOLUME 10

Newsletter

[Download August edition here](#)

[Download September edition here](#)



CONTENTS:

- Spooky Halloween 2017....1
- Follow us on Social Media.....1
- Klo-Shure 7 Features.....2
- Dairy Cabinet Pumps.....2
- Scary Copper Fittings.....3
- ClipLight Torches Battle.....3
- MacMillan Coffee Morning.....3

**SPOOKY HALLOWEEN 2017 AT PUMP HOUSE
IF YOU BRAVE ENOUGH THERE IS A SURPRISE
BUT IF YOU'RE AFRAID OF GHOSTS DON'T STAY**

**ANGRY WITCHES WITH THEIR DARK-BLACK CATS
CASTED A SPELL FROM THEIR POINTY HATS
FIND ALL THE GHOSTS FROM NEWSLETTER WALL
HIDDEN BETWEEN POSTS, CAN YOU CATCH THEM ALL?**

**SCARY FACES CARVED IN PUMPKINS BY PUMP HOUSE TEAM
WHO WILL BE THE ONE NOT TO BE TORTURED AND WIN?
YOU WILL GET TO CHOOSE**

TRICK OR TREAT?

We promise - there are no tricks, only treats for all brave souls! Count all the ghosts in our October Newsletter Issue and tweet us the number (or send an email at marketing@pumph.co.uk) Everyone with a correct answer receives sweet treats from the Pump House! The promotion ends the 31st of October 2017.



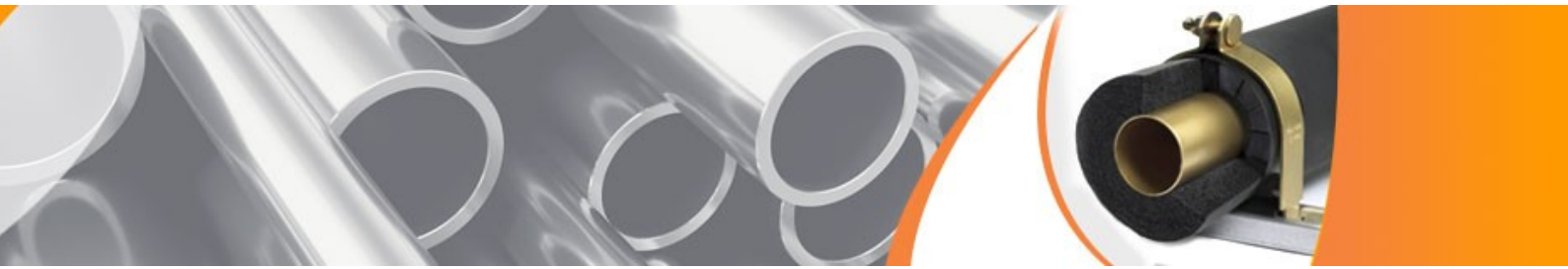
PUMPKIN CARVING

After very succesful last year's Pumpkin carving competition; the Pump House team will be taking part again! Who wins this year you decide - the voting takes part on Twitter on the 31st of October!



Follow us:





KLO-SHURE 7 FEATURES

The KLO-Shure 7- series is sized for use with elastomeric insulation. Due to its unique design, the KLO-Shure Insulation Coupling fills the void left by your typical strut clamp, allowing the contractor to secure tube and pipe runs against damage from shock and vibration, while fully insulating the tube and pipe runs.

The KLO-Shure 7-series ensures a complete vapor barrier, eliminating mold and corrosion risk, making it ideal for use in the plumbing and HVAC industries. It supports OD tube sizes between 1/4" - 4-1/8", insulation wall thickness between 3/8" - 1-1/2", and is acceptable for horizontal, vertical, and inverted installations.



CONTACT US NOW

Pump House Supermarket Dairy Cabinet Pump

Pump House has been manufacturing the dairy cabinet pump for over 10 years. At 76mm high the slimline stainless steel enclosure makes them an ideal choice for the removal of condensate water from cold-produce retail displays.



- Only 76mm high
- Barbed hose tail 1/2" drain hose
- Multiple inlets
- Trusted Little Giant Pump
- Max flow - 700 lph
- Max Lift - 23 metres
- IP 44 rated sealed box
- 12 months warranty

Available in a three models these pumps are designed to fit under the lowest of display cabinets and can be mounted either horizontally, vertically, behind a refrigerated display or on a 'cold room' wall.

Contact Pump House on
+44(0)115 900 5858 or e-mail sales@pumph.co.uk



WHO WILL BE THE KING OR THE QUEEN OF CLIGHT TORCHES BATTLE?

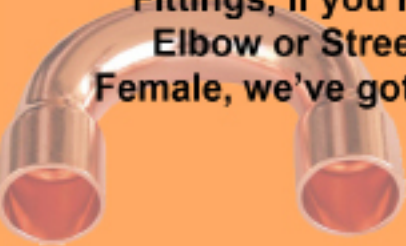
SCARY COPPER FITTINGS? NOT AT ALL!



Easy to understand:



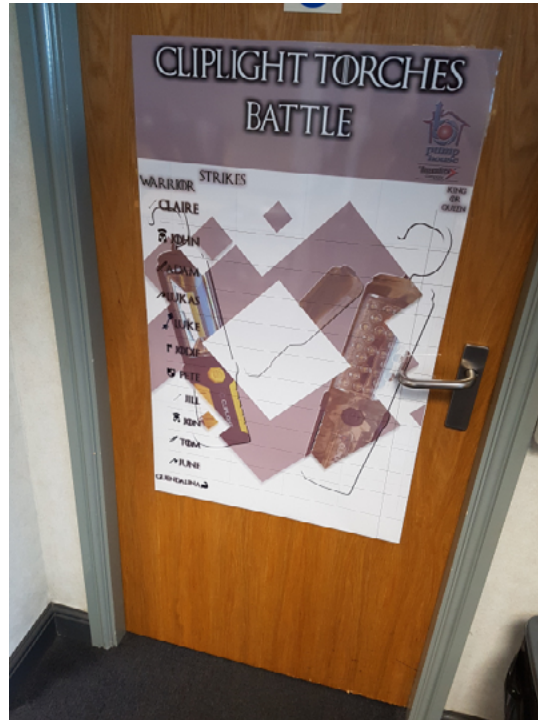
A complete range of Copper
Fittings, if you require an
Elbow or Street, Male or
Female, we've got them all!



All manufactured to the
very latest ASME and
BS/EN Standard.



CONTACT OUR WITCHES AND
WITCHES FOR MORE INFORMATION!



MACMILLAN. CANCER SUPPORT



Thank you to
everyone who
helped us to support
Macmillan on the
Friday the 29th of
September!