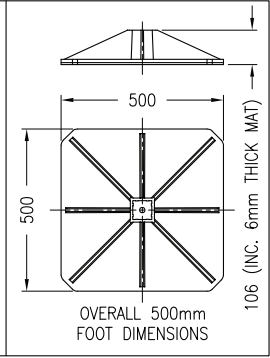
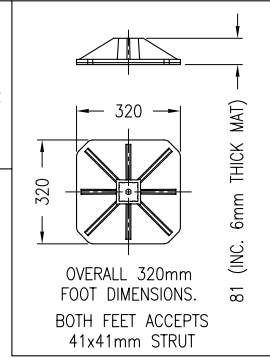
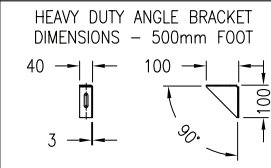
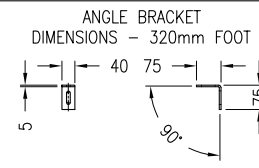


COMPONENT MATERIAL SPECIFICATION

DESCRIPTION	MATERIAL	MATERIAL FINISH
320mm FOOT	UV STABILISED, 90% POLYPROPYLENE, 10% GRP	BLACK
ADHERED MAT	100% NATURAL RUBBER WITH DRAINAGE SLOTS	BLACK
90° ANGLE BRACKETS	LOW CARBON STEEL ASTM-A36	HOT DIP GALVANISED EN ISO 1461:1999
M10x30mm SETS	LOW CARBON STEEL ASTM-A36	HOT DIP GALVANISED EN ISO 1461:1999
M10 SPRING CHANNEL NUTS	LOW CARBON STEEL ASTM-A36 CASE HARDENED	BRIGHT ZINC PLATE BS EN ISO 2081

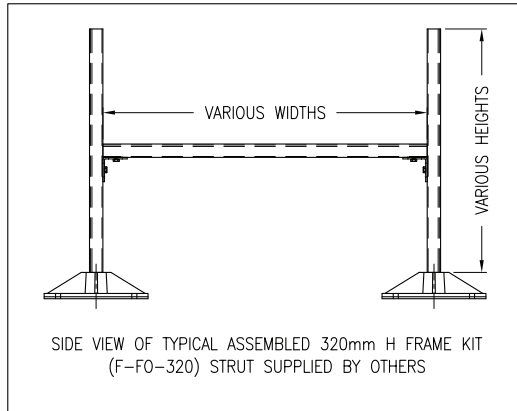


OVERALL 320mm FOOT DIMENSIONS. BOTH FEET ACCEPTS 41x41mm STRUT

OVERALL 500mm FOOT DIMENSIONS

H FRAME INSTALLATION GUIDE — DW/144

DUCTS	FRAME SUPPORT RECOMMENDATIONS
DUCTS LESS THAN 1.0m WIDE	FRAMES POSITIONED @ 3.0m FRAME CENTRES*
DUCTS 1.0m WIDE OR GREATER	FRAMES POSITIONED @ 2.5m FRAME CENTRES*
ATTENUATORS (SILENCERS)	USUALLY 2No. FRAMES PER ATTENUATOR*
DUCT CHANGES IN DIRECTION	RECOMMENDED SUPPORT NEAR CORNER*
ROOF WITH GRADIENTS EXCEEDING 1:40	DUCT SUPPORTS MAY REQUIRE BRACING IN PAIRS
ROOF WITH GRADIENTS EXCEEDING 1:40	DUCT SUPPORTS MAY REQUIRE BRACING TO STRUCTURE

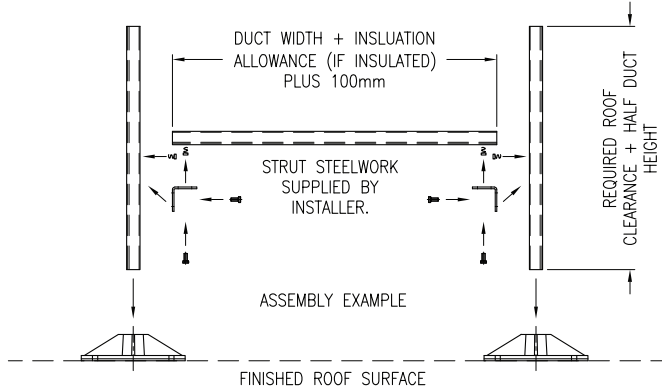


SIDE VIEW OF TYPICAL ASSEMBLED 320mm H FRAME KIT (F-FO-320) STRUT SUPPLIED BY OTHERS

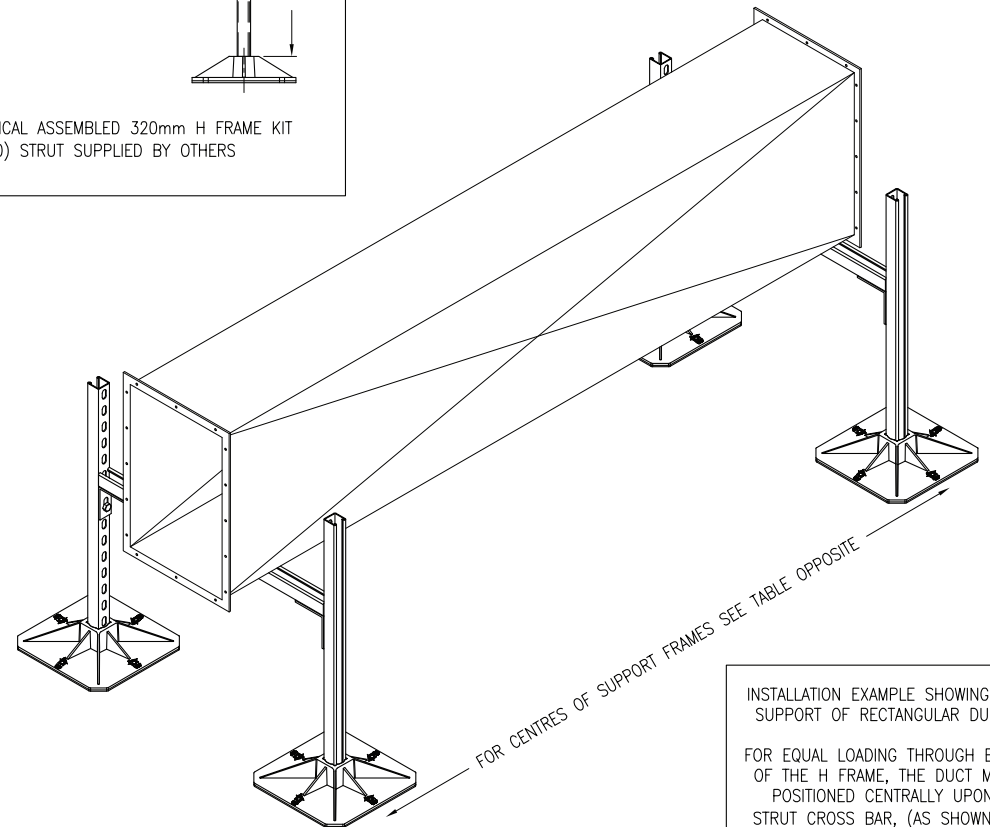
320 H FRAME KIT PACK CONTENTS		
PRODUCT PARTCODE: F-HF-320		
QTY.	DESCRIPTION	PARTCODE
2	320mm ² FEET	F-FO-320
2	90° ANGLE BRACKETS	
4	M10x30mm SET	
4	M10 SPRING CHANNEL NUTS	
1	SPECIFICATION SHEET	

500 H FRAME KIT PACK CONTENTS		
PRODUCT PARTCODE: F-HF-500		
QTY.	DESCRIPTION	PARTCODE
2	500mm ² FEET	F-FO-500
2	90° ANGLE BRACKETS	
4	M10x30mm SET	
4	M10 SPRING CHANNEL NUTS	
1	SPECIFICATION SHEET	

IT IS RECOMMENDED THAT THE DUCTWORK IS MECHANICALLY FIXED TO THE H FRAME VIA ANGLE BRACKETS (SUPPLIED BY OTHERS)



*THE ABOVE INFORMATION IS PROVIDED FOR GUIDANCE PURPOSES ONLY. IT IS ULTIMATELY THE INSTALLERS RESPONSIBILITY TO ENSURE SERVICES ARE SUPPORTED CORRECTLY IN ACCORDANCE TO THE DUCTWORKERS' MANUAL DW/144. CROSS BAR MATERIAL SELECTION DEPENDANT ON IMPOSED LOADING.



FOR CENTRES OF SUPPORT FRAMES SEE TABLE OPPOSITE

INSTALLATION EXAMPLE SHOWING TYPICAL SUPPORT OF RECTANGULAR DUCTWORK
FOR EQUAL LOADING THROUGH EACH LEG OF THE H FRAME, THE DUCT MUST BE POSITIONED CENTRALLY UPON THE STRUT CROSS BAR, (AS SHOWN HERE).



Glaisdale Drive East
Nottingham. East Midlands.
NG8 4LY, United Kingdom
☎ +44 (0)115 900 5858
✉ sales@pumpphouserpumps.com
🌐 www.pumpphouserpumps.com

This drawing is the property of
Pumpphouserpumps. No part of this drawing
may be divulged or used without permission.

UNLESS OTHERWISE SPECIFIED
Dimensions are in mm.
DO NOT SCALE DRAWING

PRODUCT NAME: TECHNICAL SPECIFICATION SHEET FOR H FRAME KITS	
NOTES: THE INFORMATION PRESENT IS GIVEN WITHOUT WARRANTY OR GUARANTEE	
DRAWN BY: D.L.JAMES	FINISH: SEE ABOVE
DATE DRAWN: 24-03-16	MATERIAL: SEE ABOVE

DRAWING No: F-HF-TSS	ISSUE STATUS: A
QUOTE REF: N/A	COPYRIGHT 2014
SCALE @ A3: NTS	

Pump House *flexi* Support Systems

One stop shop for all your building services requirements.



✓ Cable Tray & Ladder Supports.

✓ Air-Handling Unit Supports.



✓ Duct & Pipe Supports.

✓ Chiller Supports.



✓ Condenser & VRF/VRF Supports.

✓ Step-Over and Bespoke Access Solutions.



Call us today on: 0115 900 5858

www.flexisupportsystems.co.uk / sales@flexisupportsystems.co.uk / [www.twitter/PumpHouseLtd](https://www.twitter.com/PumpHouseLtd)