

Easy~Fit - Type 3 Brackets



Easy~Fit Type 3 Brackets

The unique, interlocking mechanism of the Type 3 condensing unit brackets enable the arms to be joined to the uprights in a matter of seconds. A spring-lock automatically secures the joint, preventing the arms being dislodged accidentally. For improved corrosion resistance all metal now receives a 100% zinc plating, followed by a hard ED coating, before being finished with an external grade polyester powder coating in RAL 7032.

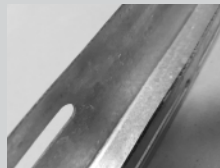
Features

- Quick assembly saves installation time and cost.
- Integral spirit-level makes correct installation of the crossbar easier.
- Uprights mount anywhere on the crossbar enabling arm span to be adjusted easily.
- Wall spacers can be adjusted to level the arms independently.
- Textured finish in (RAL 7032).

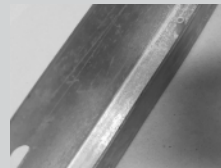
The Package

- Crossbar with Spirit Level
- 2 x Support Arms
- 2 x Uprights
- Fixings
- Installation Instructions

Weather Protection Process



Process One
Corrosion resistant raw material, often referred to as Zintec



Process Two
Zinc phosphating process, multi stage cleaning & dipping chemical zinc



Process Three
ED coating process: electrophoretic deposition (aka ED or EPD) coating



Process Four
Epoxy polyester powder coating

Related Products

All Guards
Collection Trays

Sea salts are very corrosive and affect both ferrous and non-ferrous metals. Coastal installations are particularly at risk as they are frequently exposed to sea salt solutions followed by dry periods, where this wet/dry cycle produces a very corrosive environment. We strongly recommend that in such locations only our stainless steel brackets are installed.



Part Code	Description	Safe Working Load*	Max Load	Crossbar	Upright	Support Arm	Weight
CBR3-M	Type 3 Bracket – Medium	90kg	180kg	900mm	500mm	500mm	6.8kg
CBR3-L	Type 3 Bracket – Large	140kg	280kg	1040mm	550mm	540mm	8.3kg

All brackets are tested to twice the safe working loads at an independent UK facility.

* It is the installer's responsibility to ensure that equipment weights do not exceed the safe working loads quoted and that the roof structure onto which these products are being applied is sufficiently sound to withstand the weight and point loading. If these products are used in contact with a PVC roof membrane the installer should seek advice from the membrane manufacturer on the possible migration of plasticizers, and the effect of this on the roof guarantee. These products should not be used for any purpose other than that for which they have been designed, and the products must not be modified in any way. Pump House accepts no liability for damage caused by the incorrect application or installation of these products.

The Pump House sales team are available to answer your questions or queries on this product. Our experts are waiting for your call **+44 (0)115 900 5858** or if you prefer send an email to **sales@pumph.co.uk** or visit **www.pumph.co.uk**

